

TM222 Antibody (Center)
Affinity Purified Rabbit Polyclonal Antibody (Pab)
Catalog # AP5130c**Specification**

TM222 Antibody (Center) - Product Information

Application	IHC-P, WB,E
Primary Accession	Q9H0R3
Other Accession	Q8BVA2
Reactivity	Human, Mouse
Host	Rabbit
Clonality	Polyclonal
Isotype	Rabbit IgG
Calculated MW	23230
Antigen Region	107-135

TM222 Antibody (Center) - Additional Information**Gene ID** 84065**Other Names**

Transmembrane protein 222, TMEM222, C1orf160

Target/Specificity

This TM222 antibody is generated from rabbits immunized with a KLH conjugated synthetic peptide between 107-135 amino acids from the Central region of human TM222.

Dilution

IHC-P~~1:50~100

WB~~1:1000

E~~Use at an assay dependent concentration.

Format

Purified polyclonal antibody supplied in PBS with 0.09% (W/V) sodium azide. This antibody is purified through a protein A column, followed by peptide affinity purification.

Storage

Maintain refrigerated at 2-8°C for up to 2 weeks. For long term storage store at -20°C in small aliquots to prevent freeze-thaw cycles.

Precautions

TM222 Antibody (Center) is for research use only and not for use in diagnostic or therapeutic procedures.

TM222 Antibody (Center) - Protein Information**Name** TMEM222

Synonyms C1orf160**Cellular Location**

Membrane; Multi-pass membrane protein. Cell projection, dendrite

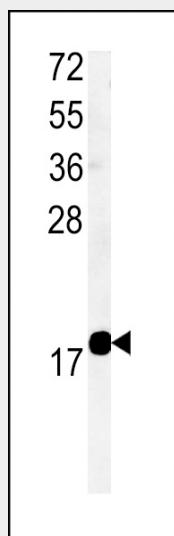
Tissue Location

Widely expressed. The highest expression is observed in the brain.

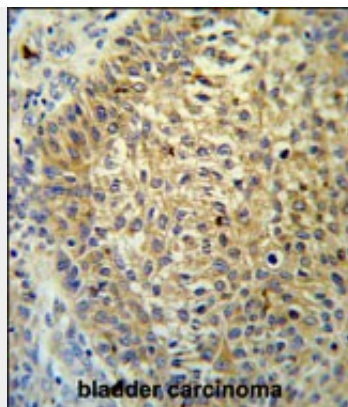
TM222 Antibody (Center) - Protocols

Provided below are standard protocols that you may find useful for product applications.

- [Western Blot](#)
- [Blocking Peptides](#)
- [Dot Blot](#)
- [Immunohistochemistry](#)
- [Immunofluorescence](#)
- [Immunoprecipitation](#)
- [Flow Cytometry](#)
- [Cell Culture](#)

TM222 Antibody (Center) - Images

Western blot analysis of TM222 Antibody (Center) (Cat. #AP5130c) in mouse bladder tissue lysates (35ug/lane). TM222 (arrow) was detected using the purified Pab.



TM222 Antibody (Center) (Cat. #AP5130c) IHC analysis in formalin fixed and paraffin embedded bladder carcinoma followed by peroxidase conjugation of the secondary antibody and DAB staining. This data demonstrates the use of the TM222 Antibody (Center) for immunohistochemistry. Clinical relevance has not been evaluated.

TM222 Antibody (Center) - Background

The function of this protein has not been specifically defined.

TM222 Antibody (Center) - References

Lehner, B., et al. Genomics 83(1):153-167(2004)